



ST. HELENS ELKS #1999

ELKS CALL

Volume 70 Issue 4

April 2025

Inst. April 1956

Inaugural Ball and

2025-26 Officer Installation

AFTER SOME INSPIRED PLANNING FROM OUR ENTERTAINMENT CHAIR, NIKKI KALETA, AND HARD WORK FROM TOO MANY VOLUNTEERS TO COUNT, WE INSTALLED OUR NEW OFFICERS IN THEIR ROLES FOR 2025 TO 2026 LODGE YEAR ON MARCH 29TH.



OUR NEWLY INSTALLED ER ERIC MICHAEL REVEALED HIS MOTTO FOR THIS COMING LODGE YEAR - **BE AN ACTIVE ELK**. HE TOOK A FEW MINUTES TO REMIND US ALL WHAT THAT MEANS TO HIM AND HOW WE ALL IMPACT THE LODGE. IF YOU MISSED IT, TAKE A MINUTE AND ASK HIM TO EXPLAIN HIS VISION FOR AN ACTIVE ELK.



NEXT MONTH'S BULLEIN WILL HAVE SOME MORE DETAILS ON THIS EVENING. WE WANTED TO INCLUDE THE EVENT IN THIS MONTHS BULLETIN - AT LEAST AT A HIGH LEVEL!



THANKS FOR SUPPORTING ANNUAL PEY CRAB FEED



We had a record turn out to the Crab Feed on February 22nd and served 120 crab dinners and 40 chicken dinners! Special thanks to Bornstein Seafoods for the amazing Dungeness Crab as always. Thanks to all the volunteers that made the event happen.



IN THIS ISSUE



Inaugural Dinner	Co.
Crab Feed	2
ER Message	3
Secretary's Corner	4
Leading Knight	5
LOE Update	5
Loyal Knight	6
Absent Members	6
Lecturing Knight	7
Drink Menu	7
Calendar	8
Entertainment Comm.	9

Club Manager Updates	9
Events & Updates	10-11
Online Safety	12
Ritual Team Update	13
Elks of the Month	14
New Members	14
Students of the Month	15
Rosters	16
Vets Updates + Honor Wall	17-18
PEY/PER	19
Birthdays	20
Directory	21

Interim Bulletin Editor: Becca Bernard

MESSAGE FROM YOUR *Exalted Ruler*



Thank you for the confidence you have placed in me to serve as your Exalted Ruler for this Lodge year. I am truly honored and humbled to accept this responsibility, and I look forward to working alongside all of you to make this a great year for St. Helens Elks Lodge #1999.

The Inaugural Ball was a tremendous success, and I want to extend my sincerest gratitude to everyone who contributed to making it such a memorable event. It was a fantastic evening filled with camaraderie, laughter, and fraternal celebration. A special thanks to our Club and staff for delivering an outstanding meal and exceptional service—they truly hit it out of the park!

I also want to express my deep appreciation to Nikki Kaleta for stepping in and taking the lead on planning and decorating the event. The Lodge looked phenomenal, and I know the countless hours she put into making everything perfect did not go unnoticed. Nikki, your dedication and hard work made the night truly special, and I cannot thank you enough.

Looking ahead, I am incredibly grateful to everyone who has stepped up to be part of the Lodge leadership this year. Whether elected officers, appointed officers, committee chairs, or committee members—each of you plays a vital role in our success. Over the past few months it was a challenge for me to ask people to get involved and it lifted my spirits when each of you agreed. Your willingness to serve has been inspiring, and I am excited to start this new Lodge year with such a dedicated team.

Together, we have the opportunity to build on our strong foundation, strengthen our Lodge, and continue making a positive impact in our community. I am looking forward to an amazing year ahead!



"Be an Active Elk"

Eric Michael
EXALTED RULER

In the final March meeting, ER Ron's final meeting was full of fun and games with a Hawaiian theme! Lots of fun. The officers got into the spirit by dressing for the occasion.

The Secretary's Corner

MEMBERSHIP BY THE NUMBERS

Members: 929*
Life Members: 76

Applicants: 5
Transfer In: 0
Reinstatements: 12

Delinquent Members: 0
Transfer Out: 5

BALLOTING
April 10th

ORIENTATION
April 16th

INITIATION
April 17th

IT'S A GOOD TIME TO PAY DUES

You won't want to miss out on benefits of your Elks membership. Make sure you pay your dues! The safest, most secure, way to pay your dues is ONLINE. Just go to sthelenselks.org. On the top **navigational bar**, click **HOME**, then click "**Pay your dues ONLINE**".

For an example click this link:
<https://search.revopay.com/elksldge>

Stephanie Bremner
Secretary
Office Hours
Mon - Wed 11:30 AM to 3:00 PM
Thursday: 5 PM to 7PM

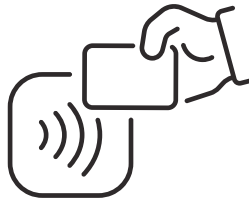


CLICK HERE **Pay Your Due ONLINE NOW**

I will receive an email telling me that you paid your dues and I will go enter the payment in the database. Then, our volunteers mail your new membership card out to you. Don't forget to keep your white RFID card for the front door. That is issued only once and is not renewed each year.

***New "ELK YEAR" began April 1st.**

79 Delinquent Members were dropped on 3/31.



SAVE your RFID card. You don't get new cards issued each year.

Fraternally,
Stephanie Bremner
Secretary

VOLUNTEERS NEEDED

As most of you know, our Secretary has a full time job. She is able to complete her duties in off hours and some from home, but we also rely on volunteers to help staff the office during weekday office hours. With the new year, we need some new volunteers as some of our current volunteers aren't able to continue. If you are open to **helping out Monday or Thursday during the daytime hours, please contact our Secretary! Basic computer skills are a bonus!**

WIN! MONEY!

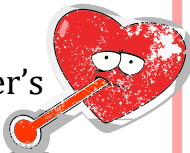
HIDDEN MEMBER NUMBER

In each bulletin, you will find a hidden member number in **[brackets]**. If it is your number, please let the bartender know to claim your prize.

LUCKY STIFFS
\$100 Doel Quinones #4442

SICKNESS & DISTRESS

- Judi Shelton
- Pam Scoonover's brother, Rick
- Nikki Kaleta's father
- Tom McMahan
- Vita Macarther
- Sharon Chatterton's brother, Shane
- Lisa Michael's sister, Dawn
- Keith Forsythe's brother
- Jaimie Sloan's niece, Kiley



New Members Candidates

The name & information of each applicant for balloting on April 10th is posted in the Lodge, along with the name of their sponsor.

CRYING CORNER

- \$100 Jesse Feathers #4656
- \$100 Dan Barrett #4529
- \$40 Christine Hays #4753
- \$100 Philip Bisner #4332
- \$40 Mark Sharinghousen #3726
- \$100 Jack Cate #973
- \$50 Asha Berendregt #4316

“From your Leading Knight”

Thank You for an amazing year as Loyal Knight and Thank You for allowing me to continue as your Leading Knight. I learn more great things about our Lodge every year. We are a very successful lodge because we care about our community and those in it. Don't forget we are part of that community, and the strength of our Lodge helps with the strength of the community.

I am looking forward to a spectacular year for us all. So many things happen every year with our Lodge and if you see something you might be interested in, please ask an Officer or the Committee Chairs that are listed in the Bulletin. Please attend a meeting, find some like minds and jump right in. No need to ask if you can attend because all members are welcome to attend any of the scheduled meetings. Look at the calendar for dates and times and we look forward to seeing you there.

I hope everyone has paid their 2025-2026 membership dues by now. If not, please go to the sthelenselks.org, home and select Pay Your Dues ONLINE button at the bottom of the page. Follow the directions and when you are paid the Secretary will have your membership card to you within a week after. Don't forget you can also donate to some of our various charities and projects. Please help the Secretary and Office Helpers out so they do not have to search and call everyone. We are an amazing organization and we love having you as a member of our St. Helens #1999 Elks Lodge.

Please make sure to read all of our Bulletin as there is always great information and our Bulletin Editor takes a great deal of time making sure all is correct and full of information for you.



FRATERNALLY,

Sundee Hamrick
LEADING KNIGHT



Ladies of the Elks Meeting Recap & Upcoming Events

Thank you Pam for running the March meeting of the Ladies of the Elks while I was out of town. Officers were nominated for the upcoming year and voting will be held at the April 1st. Meeting. The Ladies will be stuffing Easter Eggs on April 15th at 6:30 pm in the game room. The Easter Egg Hunt will be held April 19th, see bulletin insert.



Any and all Lodge members that want to help are welcome. We usually stuff around 2000 eggs, and have a good time, so if you aren't doing anything come on down to help. Alta asked for assistance with the Veterans dinner and those who could assist signed up. During the meeting we assembled thank you cards with a gift card to Dutch Brothers to place in the bags to be given to the Veterans.

The Ladies would like to thank all the Lodge members for their donations and support. The Ladies have donated over \$5000 in the past year to support the Lodge and the local community. Some of the events that the Ladies have helped with or donated to in the last year include: the Annual Easter Egg Hunt, the Ritual Team, Meadowood, St. Helens Backpack program, Kitchen Supplies, Hay Ride, Car Show, Member Memorials, Desserts for Mother's Day and Father's Day brunches, Lodge Room Remodel, Veterans Dinner, High School Scholarships, and the Kid's Christmas Party. We would not be able to do this without the support of the members of this Lodge.

We look forward to supporting this Lodge and the local community in the upcoming year.

Thank you,

Judi Kellar

President, Ladies of the Elks



"From your Loyal Knight"

....Rewarded as they shall deserve

Howdy Lodge #1999, this is Frank Bellinger, outgoing Chaplain and incoming Loyal Knight.

First things first, let's have an "open kimono" moment, as we used to say in Japan: I am new. My family and I have only lived in St. Helens for four years, and I've been an Elk for a grand total of 19 months, counting this one. It's been a rip-roaring adventure since joining Lodge #1999, and the last few months especially have been like trying to drink from a firehose.

Now stepping into Loyal Knight, there's even more to learn--plus the responsibility of keeping the Weasel Club in line during meetings (a Herculean task on its own, if you're there on Thursday you know). This Lodge adopted me pretty quickly, which is the only reason I've been successful in my endeavors thus far--and for that I am very grateful. So if I could ask you all one thing, as I step into the shoes of Sundee "Swift Justice", "The Enforcer", "Judge Dredd" Hamrick (I made those up), it would be this: please don't ever hesitate to offer your counsel or assistance. While there are some people out there that may not appreciate that, I am not one of them. If it looks like there's something I don't know, I probably don't! I will never turn down an offer of friendly advice.

I look forward to serving as your Loyal Knight, and I deeply appreciate all the support and encouragement you've given me.

Fraternally,

Frank Bellinger

LOYAL KNIGHT



Wherever Elks may roam, whatever their lot in life may be, when this hour falls upon the dial of night, the great heart of Elkdom swells and throbs. It is the golden hour of recollection, the homecoming of those who wander, the mystic roll call of those who will come no more.

*To Our
Absent
Members*

Living or dead, Elks are never forgotten, never forsaken. Morning and noon may pass them by, the light of day sink heedlessly in the West, but ere the shadows of midnight shall fall, the chimes of memory will be pealing forth the friendly message, "**to our absent members.**"

**PERCY
SMITH**

**March 3, 1929
to
March 9, 2025**



**ELKS ARE
NEVER
FORGOTTEN**

"From your Lecturing Knight"



Hello, fellow Elks!

I'm honored to serve as Lecturing Knight, holding the station of Brotherly Love—which, to me, means making sure everyone feels welcome, supported, and maybe even has a little fun along the way. One of the best ways we keep our lodge strong is by bringing in new members who share our values. This year, I'm excited to head up new member orientation, helping guide fresh faces as they find their place in the lodge and experience all the great things the Elks have to offer.

I am looking forward to a fantastic year filled with camaraderie and community! If you see me around, don't hesitate to say hello. Let's make it a great year together!

Fraternally,
Jamie Sloan
Lecturing Knight



APRIL DRINKS

Tipsy Bunny
Malibu coconut rum, strawberry puree and lemonade shaken with ice. Served over ice and garnished with a lemon.

Gummy Worm
Pinnacle whipped vodka, raspberry liqueur, lemonade and pineapple juice shaken, strained over ice and topped with club soda. Garnished with a lemon and a gummy worm.

Peach-O-Rita
Hornitos Silver Tequila, Triple Sec, peach puree, sweet & sour and muddled limes, shaken, strained over ice in a glass with a salted rim. Garnished with a lime and a peach ring.

Chocolate Peanut Butter Martini
Skrewball Peanut Butter Whiskey, Creme de Cacao liqueur, Hershey's chocolate syrup and cream shaken with ice and strained into a chilled martini glass drizzled in chocolate syrup. Garnished with a peanut butter egg.

Singapore Sling
Bombay Sapphire Gin, muddled limes, simple syrup and pineapple juice, shaken with ice. Served over ice, topped with club soda and garnished with a lime.

All drinks listed \$7.00

Tacos Tuesday + BINGO

APRIL 15TH

Dinner Served 5 to 7 PM

\$10 per Card

CASH PRIZES

BINGO NIGHT

EACH CARD PLAYS ~5 GAMES
Card Sales 5 to 5:50 pm
Calling starts at 6 pm

Tacos - \$3 each
Ground beef, tomatoes, onions, queso with sour cream and salsa on the side. Choice of hard corn tortillas or flour.

Loaded Nachos w/ Creamy Queso - \$12

Come Support This Event So It Keeps Coming Back Every Month!

THE MORE PLAYERS *The bigger the winnings!*

QUICK NOTE FROM
RODGER HAWKINS,
3RD YEAR TRUSTEE

Thank you for the trust you have displayed in me. I will endeavor to do what is right for you and the lodge.





APRIL



SUN

MON

TUES

WED

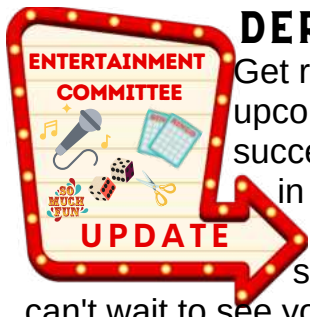
THUR

FRI

SAT

Open for Lunch Monday thru Friday 11:30 am

<p>Click here to take a look at the new Drink MENU!</p>		<p>1</p> <p>LOE MTG 6:30 pm</p> <p>Interviews</p>	<p>2</p> <p>PER Mtg 6:30</p> <p>BOD Mtg 7:00</p>	<p>3</p> <p>Lodge Mtg 7:30</p> <p>**LOE Dessert** Auction</p>	<p>4</p> <p>QUEEN OF HEARTS</p> <p>Dinner Special: 5-8:30 PM</p> <p>Lamb Shawarma</p>	<p>5</p> <p>OPEN at 2 PM</p> <p>80's TV Trivia Night</p> <p>6 PM Start</p> <p>Dinner 5-8:30 PM</p>
<p>6</p> <p>Open for Breakfast 9am - 1pm</p> <p>Poker- 1 pm</p>	<p>7</p> <p>Dinner Special: 5-7 PM</p> <p>Chicken Fried Steak</p> <p>Ritual Practice 6:30 pm</p>	<p>8</p> <p>Entertainment Committee Mtg 6 pm</p>	<p>9</p> <p>Car Show Mtg 7 pm</p> <p>\$12 Per Person Spaghetti FEED!</p>	<p>10</p> <p>5-7 PM Top Sirloin</p> <p>Veterans Committee Mtg 6:30</p> <p>Lodge Mtg 7:30</p>	<p>11</p> <p>QUEEN OF HEARTS</p> <p>Dinner Special: 5-8:30 PM</p> <p>Lasagna</p>	<p>12</p> <p>OPEN at 2 PM</p> <p>4-5-6 TONIGHT! Starts After 7 pm</p> <p>Dinner 5-8:30 PM</p>
<p>13</p> <p>Open for Breakfast 9am - 1pm</p> <p>Poker- 1 pm</p>	<p>14</p> <p>Ritual Practice 6:30 pm</p> <p>Dinner Special: 5-7 PM</p> <p>THEME: JAPAN - Chicken Skewers w/ Sushi Rolls</p>	<p>15</p> <p>5-7 PM TACOS AND BINGO!</p> <p>Click for Details</p> <p>LOE Easter Egg Stuffing 6 PM</p>	<p>16</p> <p>Welcome! 7 PM Orientation</p>	<p>17</p> <p>5-7 PM Top Sirloin</p> <p>PEY Mtg 6:30</p> <p>Lodge Mtg + Initiation 7:30</p>	<p>18</p> <p>QUEEN OF HEARTS</p> <p>Dinner Special: 5-8:30 PM</p> <p>Salmon Fish & Chips</p>	<p>19</p> <p>OPEN at 2 PM</p> <p>Easter Egg Hunt Noon</p> <p>Click for Details</p> <p>GAME NIGHT: Left-Right-Center Starts at 6 PM</p> <p>Bring Your Dollars!</p> <p>Dinner 5-8:30 PM</p>
<p>20</p> <p>LODGE CLOSED FOR EASTER</p> <p>HAPPY EASTER</p>	<p>21</p> <p>Dinner Special: 5-7 PM</p> <p>Monte Cristo</p>	<p>22</p> <p>Cigar Club 6:30</p>	<p>23</p> <p>Bulletin Submissions Due</p> <p>Tech. Comm. Meeting 7 PM</p>	<p>24</p> <p>5-7 PM Top Sirloin</p> <p>Lodge Mtg 7:30 PER. LED</p>	<p>25</p> <p>QUEEN OF HEARTS</p> <p>Dinner Special: 5-8:30 PM</p> <p>Chicken Teriyaki Bowls</p>	<p>26</p> <p>OSEA Summer Convention</p> <p>OPEN at 2 PM</p> <p>Dinner 5-8:30 PM</p>
<p>27</p> <p>Open for Breakfast 9am - 1pm</p> <p>Poker- 1 pm</p>	<p>28</p> <p>Dinner Special: 5-7 PM</p> <p>Meatloaf</p>	<p>29</p>	<p>30</p>			
<p>BULLETIN</p> <p>Submit info for May Bulletin articles by Wednesday, April 23rd ONLINE</p> <p>StHelensElks.org/Bulletin-Article-Submission</p>						



DERBY DAY IS COMING!

Get ready to don your finest hats and immerse yourself in the excitement of our upcoming **Kentucky Derby Party on May 3, 2025!** Last year's event was a remarkable success, with guests indulging in delectable Honey Bourbon-filled cupcakes, partaking in thrilling race betting, and cheering on the exhilarating Elk races and stick horse show. This year promises to be just as unforgettable, with even more surprises in store. Keep your ears open for further details as we gallop closer to the date. We can't wait to see you trackside for a day filled with fun, laughter, and unforgettable memories!

THANKS,

Nikki Kaleta

Entertainment Committee Chair



Happy April Fellow Elk's!

In case you haven't heard we have a new club manager! I can not express enough how thankful I am to have spent the last 12 years working here. The Elks is more than just a place of work, it is a family and I will truly miss seeing everyone. I have learned and grown so much in the last decade working here, which I will take with me on my next adventure. I will still be around helping with events and office work so stop by the office and say hi! Please give our new manger, Carrie McMahon, a warm welcome, I know she will do a great job and our lodge is lucky to have her!

**LODGE
UPDATE** 
**FROM YOUR
CLUB MANAGER**

MUCH LOVE,
Meghan Walth
OUTGOING
CLUB MANAGER

*Big
Changes*

Thank you to everyone that has given me a warm welcome since taking on this new role. I have worked as a volunteer alongside our current and previous staff for six years. It seems like a natural evolution to be fortunate enough to take on the Club Manager position. I have been in Customer Service Management for the last 20 years, and look forward to utilizing my strengths to continue to build up our Club! I would welcome any suggestions and ideas that you have and will always have a smile for you!

MUCH LOVE,
Carrie McMahon
CLUB MANAGER



St. Helens Elks 17th Annual Car Show

July 12, 2025



Registration Fee \$25 per car

Gates open: 6am
Car show: 8am-2pm
Judging: 9am-11am
Awards: 1pm

Breakfast and lunch available

No pre-registration.
Free Spectator parking (including handicapped parking) with free shuttle, provided by CC Rider Transit Center:
1155 Deer Island Rd.

Elks Lodge address: **350 Belton Rd**



Proceeds go to
Elks Youth Eye Services



Friendly reminder that the RV park will be closed from July 8th to 12th for annual cleaning, maintenance and the car show.

Ladies of the Elks ANNUAL EASTER EGG HUNT

Starts At Noon, Please Arrive Early To Sign In

Hot Dogs, Chips, Juice & Coffee Available after the Hunt.

SATURDAY, APRIL 19TH 2025

For Elk's Member & their Families (a member must be present)

HOSTED AT: Oregon Hill Farms - Yankton, OR



Memorial Day Weekend Fun
and Fixin at
Camp Meadowood Springs



May 23rd to May 25th

Reservations are open for cabins, motorhomes spots or tent area. Please send the information to Sundee at sundeeelk1999@gmail.com and please include: How many adults, kids (20 and under), any pets and if you want a cabin, motorhome spot or tent. Being serviced is breakfast/lunch/dinner and are available on a per meal or full meal package. Meals will be announced closer to Memorial Weekend.

You can join our OSEA Meadowood State Chair Meeting Wednesdays from 0830pm-0900pm from home or anywhere you are. This meeting is to get information on things we need to make repairs and clean up Camp Meadowood for the students when they arrive so they are safe. You can join with Google Meet or by phone. Just send me an email and I will add you to the list.

Thank you all for your support to help those in need at Camp Meadowood Springs.

Sundee Hamrick
MEADOWOOD CHAIR



RV Park Update

Last month we turned on our new RV website. This handles advance and same day reservations. There is no more paying at the club - all RV payments and reservations will go thru the new site.

[Click here to take a look!](#)

Our annual Car Show is scheduled for Saturday July 12th, 2025.

The RV park will be closed July 8th - July 12th

as we will have our annual lot cleaning and maintenance.



All RV occupants will need to be off site by Tuesday, July 8th and can return Sunday July 13th.

Please plan ahead and schedule your stay accordingly.

Thank you for your cooperation!



LEFT CENTER RIGHT

Grab your dollars and come on down for a big game of LRC at the lodge!



Saturday, April 19th

The Fun Starts at 6 pm



A Friendly Safety Reminder -

Howdy Elks Lodge #1999, this is Frank Bellinger, Member #4784. While most of you know me from the best dang plate of spaghetti this side of the Mississippi, unfortunately this is not what I do professionally; instead, I have worked in information security and data privacy for the last 20+ years.

You don't need someone in my profession to tell you that information theft and cybercrime at large are ever-present threats to our daily lives—we have news stories, social media, and (unfortunately) personal experiences to tell us that. Due to their lucrative nature these threats are only growing: as of 2023, the worldwide impact of cybercrime expressed as a Gross National Product would rank #23 globally, between Argentina and Sweden.

Crime never sleeps, as the saying goes; however, there are annual events that see huge spikes in malicious activity, and one of them is this Most Wonderful Time of the Year—tax season. During tax season your sensitive [4269]personal information—e.g. social security numbers, bank account numbers—are worth a premium. Tax return fraud takes years to resolve, if ever, making it a low risk for high reward enterprise. There are two terms in particular that you should be familiar with:

Phishing: The fraudulent practice of impersonating reputable sources through phone calls, emails, and messages, in order to induce individuals to reveal personal information.

Social Engineering: A manipulation technique that exploits human behavior and societal norms to illicitly acquire private information, access, or valuables.

Social engineering is particularly effective against the American population. Why? Because it exploits one of our strongest virtues: our charitable nature. In his book *Democracy in America*, Alexis de Tocqueville singled out American generosity and "spirit of association" as something unique in all the world. We offer help to those in need, and accept help when we are in need. We treat others as we ourselves want to be treated—and we do this freely, with no expectation of social advancement or reward.

This is exactly what social engineering is designed to exploit, and unfortunately has an enormous success rate. To help defend yourselves and your families, here are some important tips: Many agencies such as the IRS and Treasury Department are bound by federal law to initiate contact through official mail—not an email, phone call, or text message.

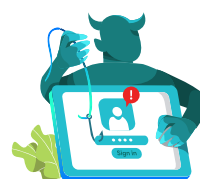


A legitimate business or reputable entity will never ask you to verify your identity through a code, password, or PIN they give you.

Banks and other financial institutions are prohibited by federal statute from sending or requesting sensitive information through email.

When accessing a website, a padlock icon to the left of the web address symbolizes a secure connection to a verified entity, and you can click on that padlock to verify that the site you are accessing is the one you intended to access.

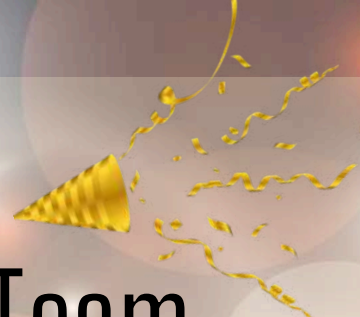
Finally, remember that we are Elks, quick and keen of perception. Trust your instincts: if it feels wrong, it probably is wrong. If in doubt, delete the text message or email, or end the phone call—if they're legitimate, trust me, they'll call you back.



Fraternally,
Frank Bellinger
LOYAL KNIGHT

Congratulations

St Helens Ritual Team



On the weekend of February 22nd, our Ritual team traveled to Ashland to compete for the **State Championship**. They've put countless hours into preparing and it was time to put that work to the test. It paid off with another win - take the title of Champions for two years in a row!

What great Camaraderie and fun the team had through the weekend!



Our officers and candidate did a wonderful job competing at State in Ashland. As a team, we took 1st place with multiple officers earning special honors.

Congratulations to our All-State Officers:

Leading Knight: Eric Michael

Loyal Knight: Sundee Hamrick

Chaplain: Frank Bellinger

Candidate: Amy Evenson

Coaches: Toni Ann, Skip, Tami, Sean, Don



W
E
L
C
O
M
E

APRIL 2025



ST HELENS
ELKS LODGE #1999



I
N
I
T
I
A
T
E
S

(NOT IN ORDER) Jeremy Johnson, Michael Ness, Jessica Pierson, Andy Sikorski, Elizabeth Van Dyke, Victoria King and ER Ron Summers.

MARCH ELKS OF THE MONTH

OFFICER OF THE MONTH: FRANK BELLINGER

Frank Bellinger is officer of the month for agreeing to be our Chaplain on our Ritual Team with only 6 weeks until our competition and ended up an All State winner. Congratulations and great job!

ELK OF THE MONTH: SHARON CHATTERTON

Sharon Chatterton for epitomizing what it means to be an Elk by spreading Brotherly Love throughout our lodge.

VOLUNTEER OF THE MONTH: ANGIE COOK

Angie Cook for all her hard work behind the scenes on the Warm Welcome, the Teen Room and Meals on Wheels bags.

YOU MAKE A REAL DIFFERENCE!





Tyler Nelson

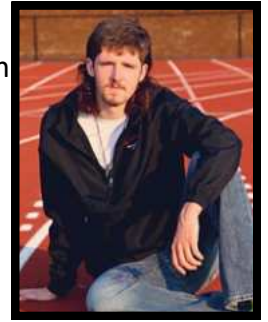
Tyler believes that school is fun because it challenges students. He enjoys challenges in life because they can bring out the best in students. If students can overcome challenges they face, whether in academics or sports, they will be rewarded.

In Tyler's strong desire to challenge himself, he has participated in various sports and activities throughout high school, from trying football, basketball, and baseball. Though, out of all of these, he has grown to one sport specifically track and field. He enjoys track and field a lot because of its capability to be both an individual sport and a team sport simultaneously. Track provides Tyler with the environment to push himself further. It's about challenging yourself to be better than you were last time, from seeing himself break his record, to shaving off more seconds each attempt. He also enjoys how track is a team sport, hanging out with friends in this community of runners, and working as a team in events like the 4 by 1 or 4 by 4. Throughout his 3 years in track, he has tried many events, gravitating towards sprinting as his main event.

Tyler as a devoted member of the National Honor Society (NHS) has accumulated over 30 hours of volunteer work for his community. For NHS, Tyler was able to fundraise \$2,600 from his individual service project (NHS) for the Humane Society in Columbia County. Integrating his 5-year long passion for streaming and love for animals, he put on a Twitch stream to raise money for the Humane Society for Columbia County.

Tyler enjoys spending his free time playing video games and running. He also dedicates time to his studies, making sure he does them to the best of his ability. In his home life, Tyler draws inspiration from his parents, highlighting his strong family connection over others. Growing up, they taught him how to be kind, and now, Tyler values honesty over everything because he believes that being straightforward with others creates genuine connections.

Tyler will carry these values as he continues his education at OSU. He would like to become a chemical engineer and design and create all sorts of medicines to help suffering people all around the world. He is motivated by his belief that helping others is a noble thing to do, which has been evident throughout his high school career. Tyler aims to be a leader that people admire, bringing fulfillment to his life.



MICHAELA DUECK

SHHS is proud to announce that Michaela Dueck has been selected as the Elks Student of the Month. She was both surprised and grateful upon learning of the recognition, viewing it as a humbling acknowledgment of her hard work.

Throughout her high school years, Michaela has been deeply involved in sports. She plays volleyball, basketball, and softball, and this year she is excited to join the flag football team. Coach Jill Ross for SHHS Girls Varsity Basketball states, "I've been lucky enough to coach Michaela the last three years. Michaela is accountable, hard working, someone who demonstrates integrity, and is constantly leading by example. She is someone who is always giving their best effort and striving to get better." In addition to her athletic achievements, Michaela is a dedicated member of the Letterman's Club, which celebrates the accomplishments of student-athletes.

Michaela has also made an impact in her community through volunteering. She has helped run youth sports camps for basketball and softball, working with children ages 6-13 to develop their skills and foster a love for sports. Michaela has also volunteered at the Volcano Classic youth basketball tournament, assisting with tasks such as running the scoreboard, reffing, and managing concessions and admissions. Her contributions help support the success of her school's sports programs and provide opportunities for younger students.

Looking ahead, Michaela plans to pursue a career in nursing. While she is still deciding whether to attend community college and transfer to a university or go straight to a four-year school, Michaela is committed to earning her Bachelor's in Nursing. Afterward, she hopes to continue her education by attending a master's program to become a Nurse Practitioner, possibly specializing in the psychiatric field. Her passion for helping others with mental health challenges was inspired by her love of psychology, which was her favorite class in high school.

As she looks forward to the future, Michaela is excited for the opportunities that lie ahead and is determined to continue making a positive impact wherever she goes.



YOUR OFFICERS

Your Newly Installed 2025 to 2026

Exalted Ruler	Eric Michael
Leading Knight	Sundee Hamrick
Loyal Knight	Frank Bellinger
Lecturing Knight	Jamie Sloan
Chaplain	Amy Evenson
Tiler	Gene Scoonover
Esquire	Chelsea Bonnett
Inner Guard	Pam Scoonover
Secretary	Stephanie Bremner
Treasurer	Tami Williams
Organist	Dean Lemire
Trustee 1st Year	Brian Bernard
Trustee 2nd Year	Rob Goshorn
Trustee 3rd Year	Rodger Hawkins
Trustee 4th Year	Andrew Bremner
Trustee 5th Year	Andy Schroder

ELKS CALL BOOSTER

Becoming an **Elks Call Bulletin Booster** costs \$20 per year. If you would like more information on the program, please email bulletin@sthelenselks.org or see the Secretary.

David Belden #4030

"VFW - Helping Veterans Help Themselves"
Join the VFW: Veterans serving Veterans

Jeff Ingebrigtsen #3734

"Elks Care ... Elks Share"

Rebecca Bliefert #3948

"To Our Absent Members"

Gilbert MacKenzie #1205

"Kindess: Spread it Around"

David Criswell #3372

"Elks Care ... Elks Share"

Dean Lemire #3349

"Keep Your Sunny Side Up"

Ron Summers #4411

"Always an Elk"

David Anderson #4537

Lew Mason #2005

Jamie Sloan #4867

25-26 Committee Chairs

Accident Prevention	Rob Goshorn
Americanism	Tami Williams
Auditing & Accounting	Amy Grubb
Drug Awareness	Anna Corradine
Flag Day	Dean Lemire
Hoop Shoot	Amy Davison
Membership	Dawn Gardner
Welcome Team	Sharon Chatterton
Lapsation	Jolene Walsh
Elks National Foundation	Frank Bellinger
Veteran Services	Alta Lynch
Public Relations	-
Youth Activities	Keith Forsythe
Community Project	Annette Pixley
PER Association	Sean Williams
Standing Relief	Eric Michael
Ritualistic	Toni Ann Irish
Scholarships	Don Kielblock
Tech Committee	Becca Bernard
Entertainment	Nikki Kaleta
Grant Writer	Annette Pixley
Activities	Frank Bellinger
Maintenance	-
Camp Meadowood	Sundee Hamrick
Lodge Photographer	Mark Pacheco
Bulletin Editor	Jason Resch
Ladies of the Elks	Judi Keller
All American Documentation	Anne Cox
Government Relations	Brian Pixley

SPAGHETTI FEED

All you can eat Spaghetti,
garlic bread & salad bar.
4 different sauces!



Adults \$12
Children \$9

April 9th
5 pm to 7 pm

I WANT TO GIVE A BIG SHOUT OUT TO ALL THE VOLUNTEERS AND SUPPORTERS WHO ASSISTED WITH THE "VIETNAM VETERANS 50TH ANNIVERSARY OF THE END OF THE VIETNAM WAR" AND THE "WELCOME HOME" THAT THEY SO DESERVED.

WHEN YOU SEE THESE FOLKS TELL THEM THANK YOU

- BECCA BERNARD, ASHLEY TAYLOR, RON AND CINDY SUMMERS, CARRIE KING, LINDA TRYNER, TOM HALLIGAN, DAVE WALKER, MARY LAITALA, DON KIELBLOCK, NICK FLORY, AMY GRUBB, CHRIS SLOAN, FRANK BELLINGER, CANDICE ATNIP AND SON, SHARON CHATTERTON, GARY AND ALICIA TANNER, MARK KREUTZER, ROSEMARY LOHRKE, MARK PACHECO, CARRIE AND DAN McMAHON AND ANYONE ELSE I MAY HAVE FORGOTTEN, PLEASE FORGIVE ME!



A NEW "ELKS YEAR" IS HERE, AND WE NEED VOLUNTEERS! Check your calendars and see if you might have time available to volunteer, not just with the Veterans but the other charitable groups within the Lodge. That being said, let me plant a little bug in your ear to mark your calendars for " Elks Car Show (St. Helens Elks Cruise in) JULY 12th. The Veterans Committee will be cooking and serving breakfast. Watch for the sign up sheet! The funds raised from the breakfast benefits Veterans assistance and programs.

A reminder that on the first Friday of every month at the Moose Lodge we have an "Armed Forces Breakfast" starting at 9:00 a.m. good food and information, hosted by our Columbia County Veteran Service Officer, Erin Nolan.

I want to welcome and encourage our new members (and all members) to contact me if they have questions regarding our programs and also if they have the time to volunteer and assist with supporting our programs. What we as Elks do for our Veterans can not be done without all of your help. It truly is a team effort and can not be done without all of us working together, and for that I thank all of you for the continued trust you have given me to move forward!

Respectfully,
Alta Lynch
Veterans Chair
503-369-7635 (cell)



**RED
Friday**

**ELKS ALWAYS
WEAR RED
ON FRIDAYS**

SAVE THE DATE

**Veterans
Committee Meeting**
April 10th, 6:30 pm
at the Lodge

Don't forget **RED** Friday. **R**emember **E**veryone **D**eployed

Kenneth Aho
 Raymond Alden
 Veston Anderson
 Raymond Andrews
 Stephen Atchison
 Shaad Atnip
 Stanley Avis
 Larry Baird
 Joseph Baldwin
 William Barnum
 Dan Barrett
 Gary Baseel
 Greg Bassine
 Lowell Bauer
 Kip Beebe
 David Belden
 Frank Bellinger
 Paul Bennett
 Norman Bernhard
 John Bernhardt
 Chuck Berry
 Jerry Beickel
 Lloyd Billings
 Philip Bisner
 Gary Bliefernich
 Robert Borden
 Richard Brown
 Gary Buchanan
 Steven Buchanan
 Seamus Campbell
 Jack Carter
 Jerold Cate
 Christopher Causey
 Kevin Chase
 Donald Cherry
 Stanley Chiotti
 James Chisum
 Danny Clark
 David Clark
 David L. Clarke
 Russell Clark
 Dean Cox
 William Crist
 David Criswell
 Liz Davidson
 Glenn Davis
 Mitchell Davison
 Amy Davison
 Chester Dewolfe Jr
 Mark Didier
 Gary Dinsmore
 Earl Dotson
 Gordon Driscoll
 Wesley Dubois
 William Eagle
 Jerry Erkenbeck
 Amy Evenson
 Larry Eeanson
 Allen Fay
 Joe Feinman
 Sherri Flannery
 Michael Floeter
 Nicholas Flory

BPOE #1999
VETERANS
HONOR WALL
WE THANK YOU FOR
YOUR SERVICE.



Thomas Ford
 Keith Forsythe
 Melvin Freeman
 Roger Gallacci
 Daniel Garrison
 John Gedlich
 Robert Goshorn
 Kenney Gregory
 Joseph Gross
 Monte Gustafson
 Rodney Harding
 William Harris
 Susan Hart
 Rodger Hawkins
 David Hayes
 Adam Hayward
 Gary Helderman
 Dale Hester
 Philip Hickey
 Bill Hildebrand
 Stephen Himes
 Elmer Hinkle
 Stanley Hopkins
 Eugene Humbert
 Marcus Isett
 Raymond Jacobs
 Harold Jennings
 James Jennings
 Michael Johnson
 Edwin Johnston
 Edward Jones
 James Julian
 John Julian
 John Kauffman
 Clinton Kerns
 Don Kielblock
 Robert Knudtson
 Dennis Kuhl
 Alan Lambert
 Kenneth Lang
 Michael Langford
 Chuck Larsen
 Drew Layda

Larry Lucas
 Ted Lufkin
 Richard Lumos
 Finos Lunsford
 Vita MacArthur
 Douglass MacEllven
 Gilbert MacKenzie
 Leonard Marson
 Gerald Martin
 Ronald Maruska
 James May
 Kelly McAtee
 Charles McCartney
 David McDermott
 Terry McDowell
 Art McMullen
 Norman Mehrer
 Don Melcher
 Leo Mock
 Thomas Moquin
 Douglas Morten
 LeRoy Mueller
 Clifford Multanen
 Raymond Murphy
 Aaron Mutt
 James Myers
 Duane Neukom
 Michael Ness
 Michael Newcomer
 Steve Newman
 Robert Nichols
 Connie O'Hearn
 Robert Obermeier
 John Odenthal
 Tim Ordal
 Gary Orey
 Nolan Parrett
 Douglas Peal
 Karl Pearson
 Pete Peters
 Frederick Petri
 Cathy Pogue
 David Pfaff

Rolland Kane
 Doel Quinones
 Steven Rehard
 Dean Robertson
 Alexander Roller
 Steven Rosenlund
 Scott Russell
 Ralph Sackhoff
 Mike Sacry
 Kenneth Sailer
 Caleo Sallee
 John Seeley
 Stephen Semling
 James Sheehy
 Richard Sherlock
 Gerald Shoemaker
 Tyler Simons
 Milo Simonson
 Louis Skolfield
 Mark Slighter
 James Sloan
 Craig Smith
 Don Smith
 Jerry Smith
 Stephen Spinden
 William St John
 Deborah Stano
 Stephen Stano
 Paul Stansbury
 Gary Tanner
 Jay Tappan
 Ashley Taylor
 Gordon Thistle
 Gary Thomas
 Jim Thompson
 Steven Thompson
 Carl Timmons
 Liam Tindall
 Troy Tindall
 Terence Trana
 Patrick Trapp
 James Tupper
 Camren Turner
 Mark Turner
 Tim Underwood
 Richard Vetkos
 Tim Waine
 David Walker
 Doug Walker
 Ray Wallis
 William Washburn
 Steve Weber
 Troy Weiss
 David Welch
 Don West
 Thomas West
 Eli Weston
 Alan Widme
 Dennis Widme
 Timothy Williamson
 Michael Wilson
 Joel Yarbor
 John Yarbor

PAST EXALTED RULERS

(1) Past Elk of the Year (2) Past District Elk of the Year (3) Past OSEA State Elk of the Year (4) Past District Deputy Grand Exalted Ruler (5) Past State President OSEA (6) OSEA Hall of Fame (7) Vice President OSEA (D) Deceased

1956-57: Everett Freytag (D)	1973-74: Bert Burr (1,4,D)	1990-91: Bob Medley (D)	2008-09: Rich Crandall (4,6)
1957-58: Bill Kampala (D)	1974-75: Ray Granger (D)	1991-92: Jerry Erkenbeck	2009-10: Buck Yarbor
1958-59: Harold Scharback (D)	1975-76: Gene Arntt (1,D)	1992-93: Buzz Shoemaker (4)	2010-11: Daryl Braught (D)
1959-60: Don Bemis (D)	1976-77: Steve Tupper (D)	1993-94: Tony Dewey	2011-12: David Backlund (7)
1960-61: Ab Hearing (1,D)	1977-78: Larry Cade (D)	1994-95: Pat Irish	2012-13: Marcus Gagnier
1961-62: Bill Rawlings (D)	1978-79: Chuck Opperman (D)	1995-96: Joel Yarbor	2013-14: Jeff Kemp (1)
1962-63: Lee Pennell (D)	1979-80: George LeMont (4,D)	1996-97: Alex Roller (1)	2014-15: Gary Bliefertnich
1963-64: Andy Knudsen (4,D)	1980-81: Tony Crawford (1,4,5,D)	1997-98: Bud Sook	2015-16: Tina Jennings (1)
1964-65: Doc Mason (D)	1981-82: Don Jensen (5,6)	1997-98: Bud Sook	2016-17: Gary Bliefertnich
1965-66: Doc Mason (D)	1982-83: Jerry Congrove	1999-00: Curt Moilan	2017-18: Gary Bliefertnich
1966-67: Jack Riesterer, Jr. (D)	1983-84: Rosie Baquera (1,D)	2000-01: Curt Gagnier	2018-19: Jim Barber
1967-68: Arlen Olson (D)	1984-85: Phil Dewey (D)	2001-02: Dwight Schwappe	2019-20: Matt Holmes
1968-69: Archie Wyland (D)	1985-86: Bill Parrish (D)	2002-03: Jim Jennings (1)	2020-21: Naomi Mikesell (1)
1969-70: Don Barnett	1986-87: OJ Meyer (D)	2003-04: Scott Waterman (1)	2021-22: Dan Biden
1970-71: Mack Ballard (D)	1987-88: Bud Evans (D)	2004-05: Leon Anderson (1)	2022-23: Dan McMahon
1971-72: Dan Linhares (1,2,3,4,D)	1988-89: Bob McMillan	2005-06: Toni Irish (1)	2023-24: Sean Williams
1972-73: Dan Linhares (1,2,3,4,D)	1989-90: Joe Errante (D)	2005-07: Dave Criswell	2024-25: Ron Summers
		2007-08: Harry Jennings	

Thank you for all you have done and continue to do!

PAST ELKS OF THE YEAR

(1) Past Exalted Ruler (2) Past District Elk of the Year (3) Past OSEA Elk of the Year (4) Past District Deputy Grand Exalted Ruler (5) Past State President OSEA (6) OSEA Hall of Fame (D) Deceased

1956-57: No Elk of the Year	1977-78: Dave Heurung (D)	1996-97: Curt Moilan	2014-15: Jeff Ingebrigtsen
1957-58: No Elk of the Year	1978-79: George Schmitz (D)	1997-98: No Elk of the Year	2015-16: Hal Hamilton
1958-59: No Elk of the Year	1979-80: Neil Willhoft (D)	1998-99: Gerry Chopping (D)	2015-16: Jeff Kemp (1)
1959-60: No Elk of the Year	1980-81: Don Addington (D)	1998-99: Alex Roller (1)	2015-16: Alta Lynch
1960-61: No Elk of the Year	1981-82: Harry Denison (D)	1998-99: Doug Stewart (D)	2015-16: Karla Reinholdt
1961-62: No Elk of the Year	1982-83: Ted Henningsen (D)	1998-99: Al Widme (2)	2015-16: Chip Stewart
1962-63: Frank Sopp (D)	1983-84: Dick Backlund	1999-00: Ab Hearing (1,D)	2016-17: Jeff Tyree
1963-64: Ray Claseman (D)	1984-85: Buford Hayes (2,D)	2000-01: Leon Anderson (1)	2017-18: Brian Rosenthal
1964-65: No Elk of the Year	1985-86: Rollie Martin (D)	2001-02: Jim Myers	2018-19: Lowell Bauer
1965-66: Harold Olsen	1986-87: Bob Ellis (D)	2002-03: Tony Crawford (1,2,5,D)	2018-19: Mark Kreutzer
1966-67: Buell Lamberson (D)	1987-88: Bruce Oester (2)	2003-04: Darrel McFarland	2019-20: Ron Grant (D)
1967-68: Neil Willhoft (D)	1987-88: John Rasmussen (D)	2004-05: Nancy Stewart	2019-20: Cliff Multanen
1968-69: Bert Burr (1,4,D)	1988-89: Curly Burgess (D)	2005-06: John Odenthal (2)	2020-21: Richard Sherlock
1969-70: No Elk of the Year	1988-89: Ken Eimer (2,D)	2006-07: Jim Jennings (1)	2021-22: April Burbank
1970-71: Everett Stermer (D)	1989-90: Jim Gentzler (D)	2007-08: Scott Waterman (1)	2021-22: Jenni Gilbert
1971-72: Gene Arntt (1,D)	1990-91: Dan Linhares (1,2,3,4,D)	2008-09: Tina Jennings (1)	2021-22: Naomi Mikesell (1)
1972-73: Pete Peters (2)	1991-92: Roy Eastwood	2009-10: Rich Crandall (1,4,6,)	2022-23: Becca Bernard
1973-74: Jim Livingston	1992-93: George Ricker (D)	2010-11: Richard Sherlock	2022-23: Sundee Hamrick
1974-75: Jack Carter	1993-94: Bob Simpson (1)	2011-12: Keith Forsythe	2022-23: Dean Lemire
1975-76: Don Cherry	1994-95: Jack Tice	2012-13: Toni Irish (1)	2022-23: George Mikesell
1976-77: Rosie Baquera (1,D)	1995-96: Don Nunn (D)	2013-14: Jud Yarbor	2023-24: Dave Walker



April Birthdays



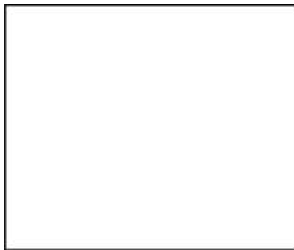
Damaure Jacobs	1
David McDaniel	1
Robert Obermeier	1
James May	2
Amy Miller	2
Jason Rautenkranz	2
Blair Rothwilson	2
Bruce Wallace	2
Troy Weiss	2
Scott Russell	3
Kyle Boggs	4
Chelsea Hamilton	4
Dustin Trahan	4
John Bellisle	5
William Willis	5
Elizabeth Barnes	6
Susan Patrick	6
Vicki Beehler	7
Promise Swope	7
Gary Thomas	7
Rebecca Bliefernich	8
Melinda McGann	8
Steven Bubar	9
Angela Culver	10
Michael Emmert	10
Ronda Hills	10
Patrick Trapp	10
David McDaniel	11
Angela Cook	12

V Schroder	12
Brian Bartow	13
Craig Smith	13
Lilian Biden	14
Donald Waterman	14
Rodger Hawkins	15
Jennifer Parral	15
Deanna Rask	15
Edith Douglas	16
Richard Adair	17
Tracey Heimback	17
Roseann Irwin	17
Eric Michael	17
Doel Quinones	17
Katherine Small	17
Mitchell Voegele	17
Suzanne Dahl	18
Eugene Preheim	18
Laurie Holdner-Wilson	19
Jacqueline Sinclair	20
John Waikart	20
Debra Sharron	21
Milo Simonson	21
Roger Williams	21
Jeremy Johnson	22
Arthur Leskowich	22
Leslie Luttrell	22
Camren Turner	22
Shari Kreier	23
Jeffrey Miller	23

Richard Stenlund	23
Ryan Broberg	24
Luis Gonzalez	24
Gregory Sherman	24
Jalyn Wilbert	24
Elizabeth Cruickshank	25
Stephen Himes	25
Marcus Isett	25
Megan Bartlett	26
Gary Dinsmore	26
Leianne Robertson	26
Lonnie Aldrich	27
Bob Bernert	27
Kenneth Lee	27
Ceton Van Meter	27
Patricia Dunning	28
Denise Flahaven	28
Keith Forsythe	28
Jenni Hannemann	28
James Harlow	28
Heather Harrison	28
Steven Rosenlund	28
Michael Wilson	28
Brea Paulson	29
Patrick Propst	29
Tyler Tacla	29
Ray Wallis	29
Jolene Walsh	29
Shawn Howland	30
Daniel Klepel	30



City State Zip
Address
First Last



RETURN SERVICE REQUESTED

350 BELTON ROAD
ST. HELENS, OR 97051

#1999  ELKS

B.P.O.E. #1999 Saint Helens Elks Lodge



CONTACT US

GENERAL INFORMATION

B.P.O.E. #1999
350 BELTON ROAD
ST HELENS, OR 97051

CLUB 503-397-1999
FAX 503-397-9847

ACCOUNTING EMAIL:

Accounting@StHelensElks.org

LODGE BULLETIN EMAIL:

Bulletin@StHelensElks.org

SECRETARY EMAIL:

Secretary@StHelensElks.org

CLUB EVENTS:

Club-Events@StHelensElks.org

www.StHelensElks.org

REGULAR OFFICE HOURS

MONDAY 11:30 AM TO 3 PM
TUESDAY 11:30 AM TO 3 PM
WEDNESDAY 11:30 AM TO 3 PM
THURSDAY 5:00 PM to 7 PM

CLUB HOURS

MONDAY 11:30 AM TO 9 PM
TUESDAY 11:30 AM TO 9 PM
WEDNESDAY 11:30 AM TO 9 PM
THURSDAY 11:30 AM TO 10:30 PM
FRIDAY 11:30 AM TO 10 PM
SATURDAY 2 PM TO 10 PM
SUNDAY 1 PM TO 8 PM

WWW.FACEBOOK.COM/BPOE1999

Directory

